

RP62LGBK



A safety strip which prevents fingers being jammed on the hinge side of a door. It is fixed to the door and the jamb on the hinged side.

Note: It is recommended to fit RP62LGBK to the full height of the door/jamb for maximum protection. For longer lengths, butt join together.

RP62LGBK is reversible for a light grey or black finish.

Location: Door and jamb of 0-180 degree opening butt hinged or centre pivot doors.

Finish: Satin clear (silver) anodised aluminium (15µm).

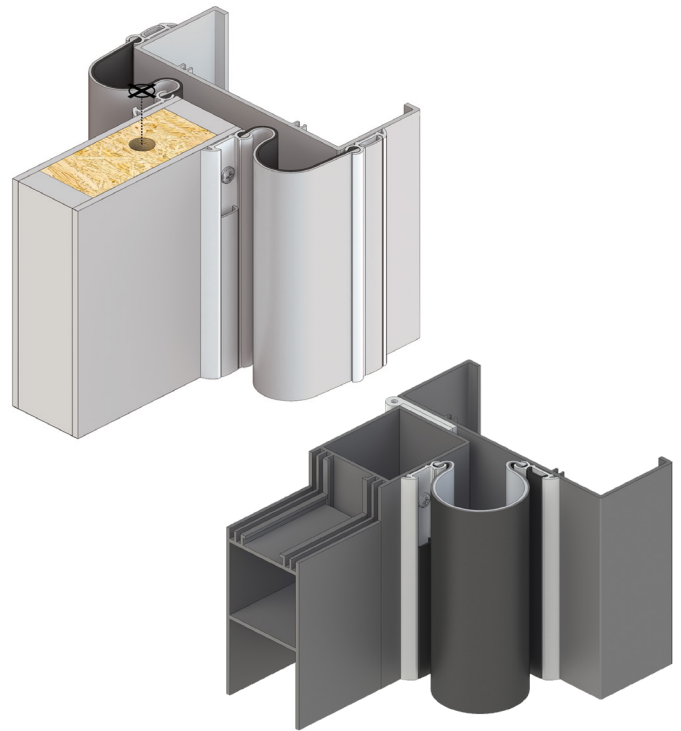
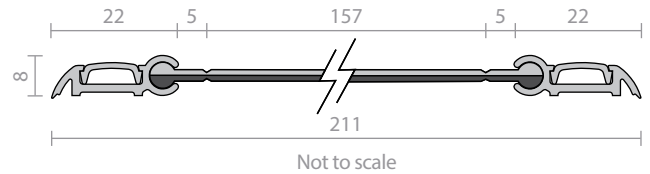
Fixing: Screw fix. Zinc plated, cross recess head S.T. screws and cover strip supplied. Fixing holes are pre-slotted.

Seal: RP462LGBK. Reversible flexible light grey/black PVC rubber. Light grey and black flexible PVC cover strips included.

Sizes: 2500mm.

Approvals

Durability Tested to BS 8613:2017 Class 1 Finger protection devices for pedestrian doors.



RP62s



The smaller RP62s safety strip helps prevent fingers being jammed on the hinge barrel side of a door.

When used with the larger RP62 series, these safety strips will assist finger jam protection on both sides of the door at the hinged side.

Note: It is recommended to fit RP62s to the full height of the door/jamb for maximum protection. For longer lengths, butt join together.

RP62s is reversible for a light grey or black finish.

Location: Door and jamb of 0-170 degree opening butt hinged doors.

Note: Check dimensions for broad butt and parliament style hinges (user determined).

Finish: Satin clear (silver) anodised aluminium (15µm).

Fixing: Screw fix. Zinc plated, cross recess head S.T. screws and cover strip supplied. Fixing holes are pre-slotted.

Seal: RP462SLGBK. Reversible flexible light grey/black PVC rubber. Light grey and black flexible PVC cover strips included.

Sizes: 2500mm.

Approvals

Durability Tested to BS 8613:2017 Class 2 Finger protection devices for pedestrian doors.

